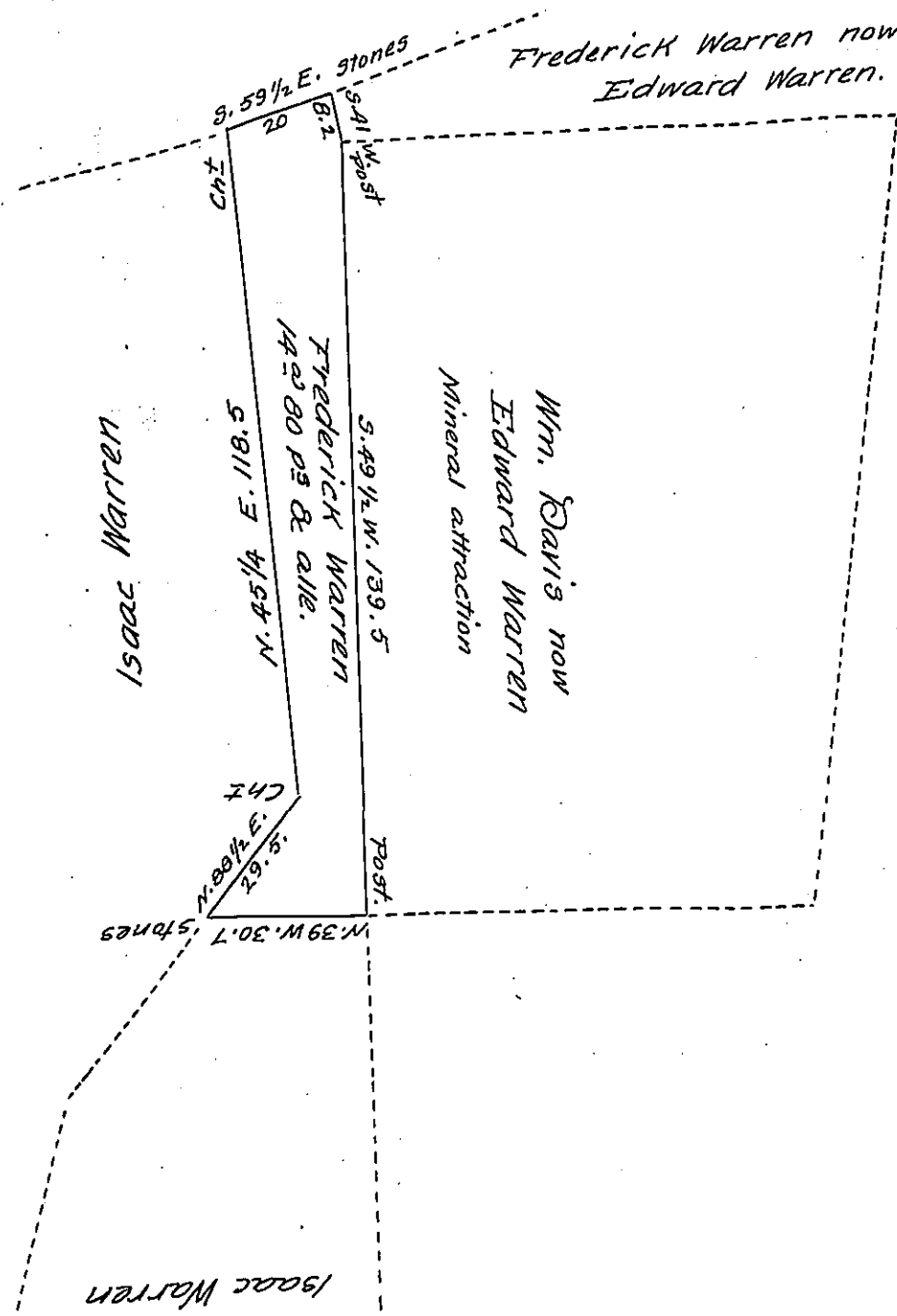


FORM NO 1.



Situate in Marshall Township Adams County being part of a larger tract said to contain 329 ± 136 p<sup>3</sup> & alle. but now found to contain 497 ± 73 p<sup>3</sup> & alle. Surveyed Aug<sup>t</sup> 28<sup>th</sup> 1794 by Moses McClean D. S. by warrant to Frederick Warren dated May 7<sup>th</sup> 1794 # divided from the residue Dec<sup>r</sup> 7<sup>th</sup> 1820 for Edward Warren containing fourteen acres eighty perches & alle.

By Sam<sup>l</sup>. Sloan D. S.

To Jacob Spangler Esq.  
Surveyor General.

# Day dated 24<sup>th</sup> April 1798.

IN TESTIMONY that the above is a copy of the original remaining on file in the Department of Internal Affairs of Pennsylvania, made conformably to an Act of Assembly approved the 16th day of February, 1833, I have hereunto set my Hand and caused the Seal of said Department to be affixed at Harrisburg, this fourth day of June 1907

*Henry Howe*  
Secretary of Internal Affairs.